

*The* **INTERNATIONAL**

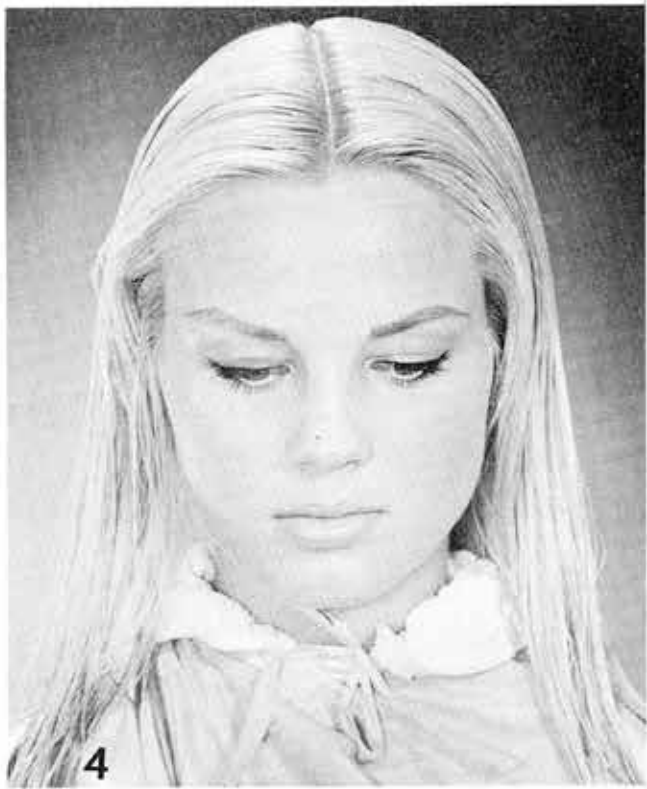
*Convertible  
Cut*



*by*

**James Victor**





#4 Our model's hair has been shampooed and parted for even distribution.



#5 Start on the right side and with the aid of a large rake comb, the excess lengths are removed in the manner illustrated.



#6 Continue same technique on model's left side. Stylist must elevate rake comb far enough away from model's head to prevent cutting hair too short. We suggest the stylist leave at least four inches at neck line and sides.



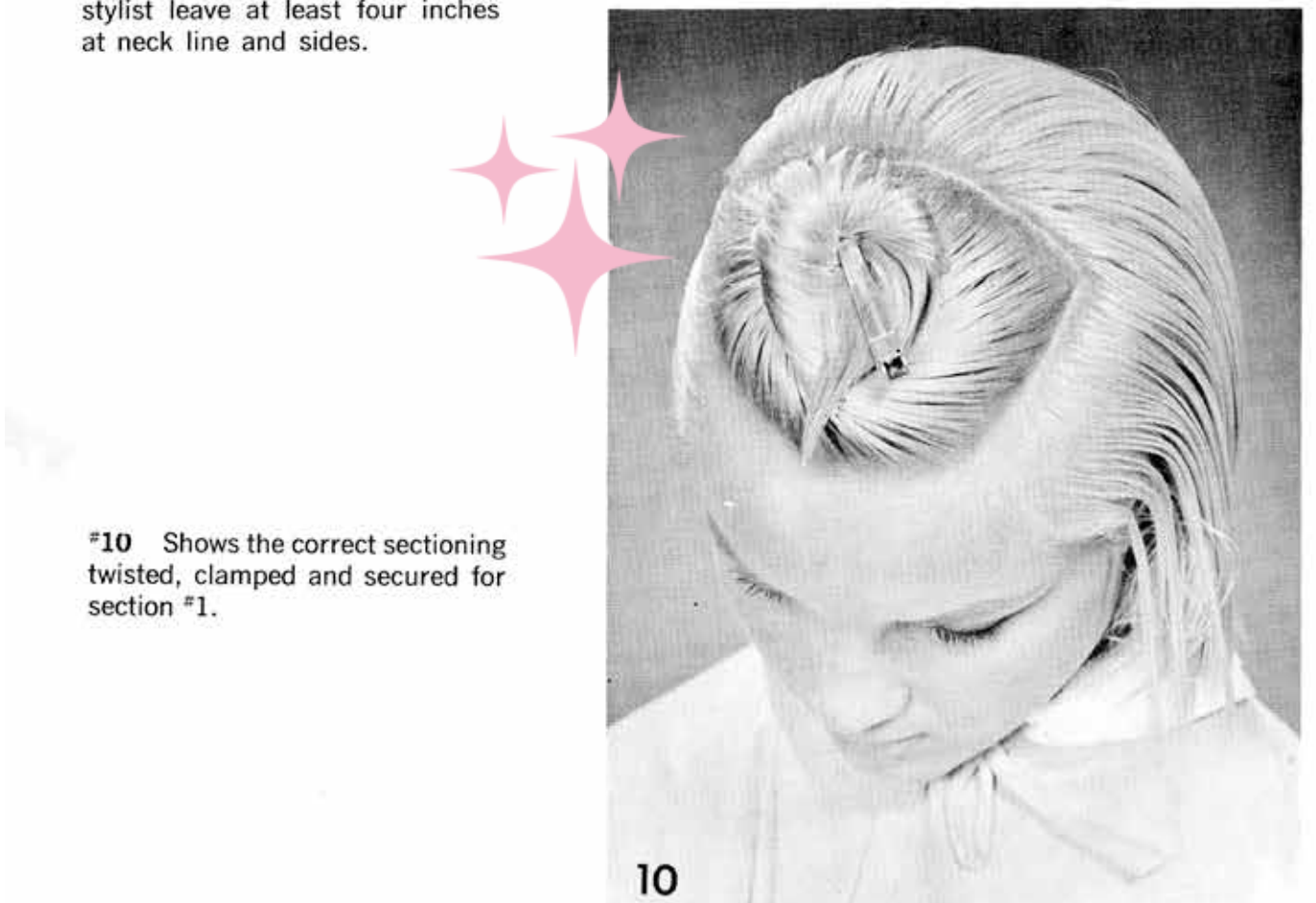
#7 After removing all excess length, model's hair is combed directly back from face as illustrated.



#8 Start at the center of indentation, part back about four inches, then straight across the crown, and then forward to hair line indentation on other side.



#9 Illustration of hair being twisted after proper sectioning.



#10 Shows the correct sectioning twisted, clamped and secured for section #1.





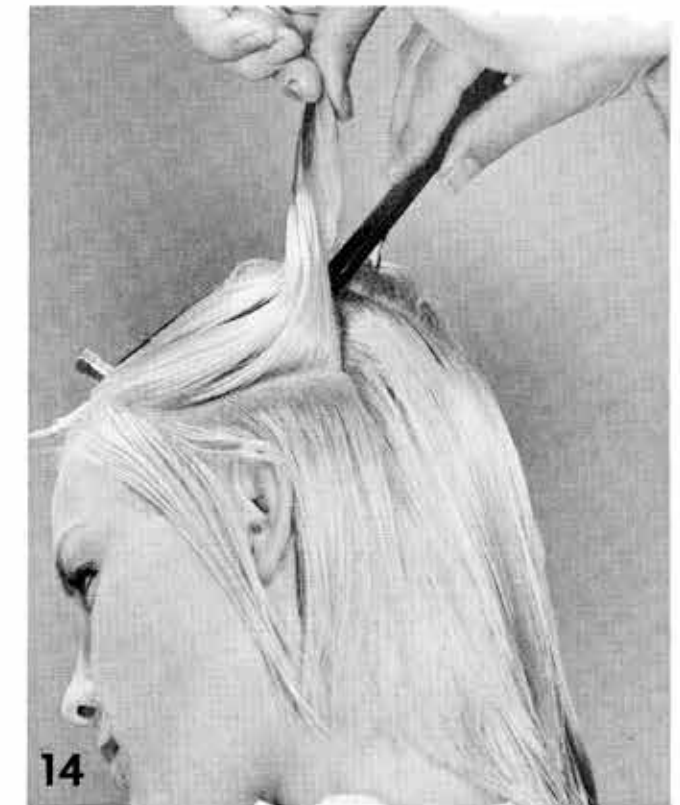
**#11** Part off a second section approximately the same size as section 1, encircling the crown. Twist this hair and clamp as illustrated in #12.



**#12** Completion of section 2.



**#13** Start at left side indentation line, part down hair line approximately one inch from hair line, extend to approximately two inches behind ear. This section will continue across nape line and extend upward to other side of head.



**#14** Part off to complete section.



**#15** Twist and clamp, shows completion of section 3.

**#16** Continue one inch guide line to center of nape of neck. Section off with a downward motion at center of crown. Completes section 4.



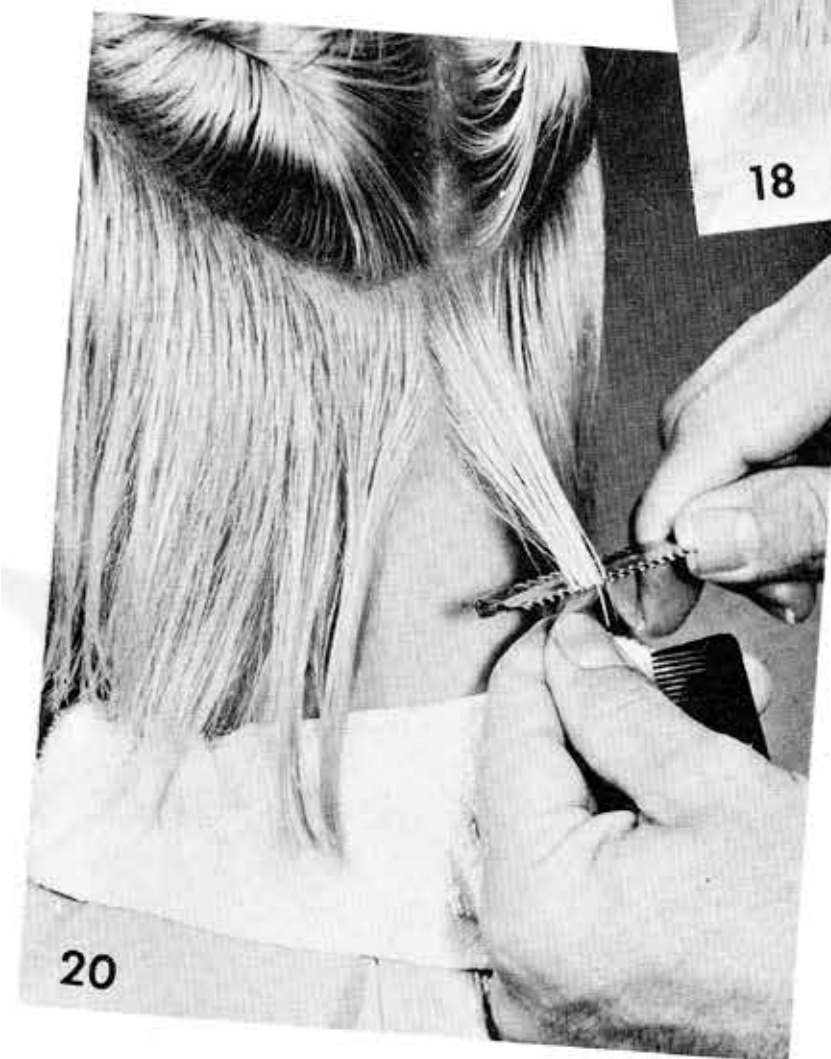




**#17** Continue one inch guide line parting to two inches behind ear. Twist and clamp. This completes section 5.



**#19** Measure down two inches from center of nape line to determine length at neck line.



**#20** Cut off to the two inch length at neck line.



**#18** Continue one inch guide line up to indentation line. Twist and clamp. Completes section 6. When sectioning is finished there should be a one inch guide line from indentation to indentation.





#21 At ear line, section off inch strip in front of ear. Place comb at ear lobe and measure to one inch below ear lobe.



#22 Cut off to one inch length below ear lobe.



#23 Repeat of the previous side. Measure one inch length below ear lobe.



#24 Cut off to one inch length below ear lobe.

#25 Return to nape line, pick up previously cut hair with a section of uncut hair.

#26 Slide fingers downward, when guide line hair falls from fingers, cut hair remaining in fingers. Fingers guide constantly to the one inch length previously cut at ear.







#27 Continue cut, angling cut hair to area one inch below ear lobe. Note angle of comb — to illustrate curvature.



#28 Illustrates the picking up one inch guide line beneath ear lobe with fingers angled upward toward cheek.



#29 Illustrates cutting guide line hair, note angle of fingers elevating cut upward toward cheek.



#30 Complete left side guide line. Observe that the ear and section behind it is completely covered.





31



32

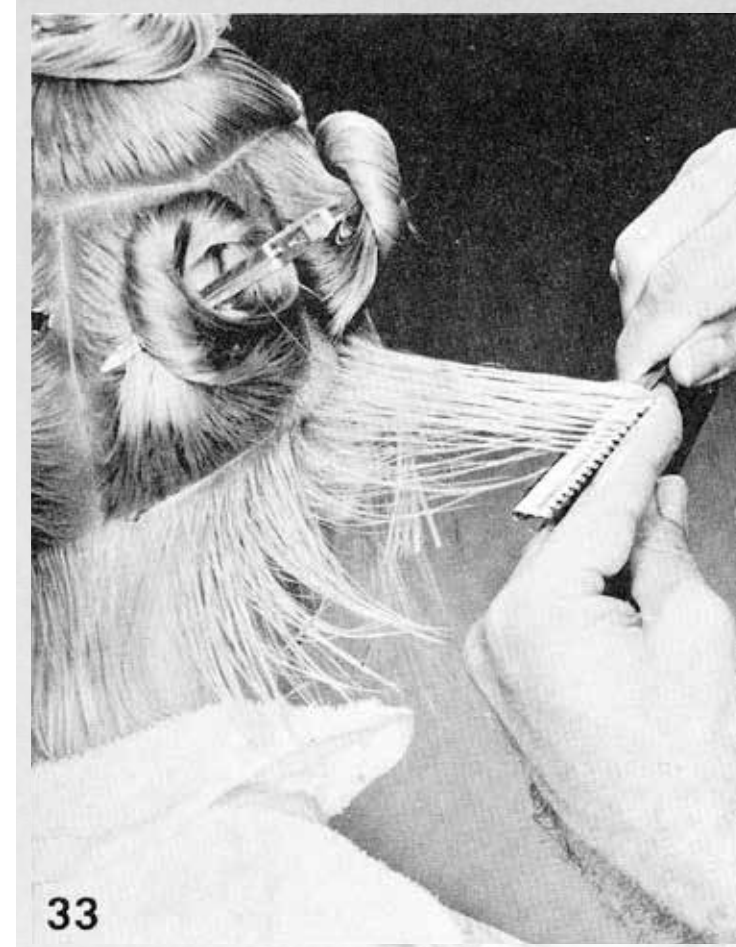
#31 - 32 - 33 - 34 - 35 Return to center of nape line, pick up previously cut hair with section of uncut hair and continue to cut the opposite side of hair. #35 The comb indicates the angle of cut, again elevated upward toward cheek.



34



35



33



**Find  
Essential  
Vintage Hair  
Tools**







#36 Start at section three, comb hair down into guide line hair. Make one inch vertical partings starting at hair line.



#37 Pick up entire strip between fingers and comb hair out at a 90 degree angle from head.



#38 Sliding fingers outward, when guide line hair stops falling, cut remaining hair three inches in length.



#39 Illustrates again the importance of the 90 degree angle in achieving a three inch length. Complete section 3, working back in one inch strips.



#40 Section 3 completed and section 4 is combed down over guide line hair.



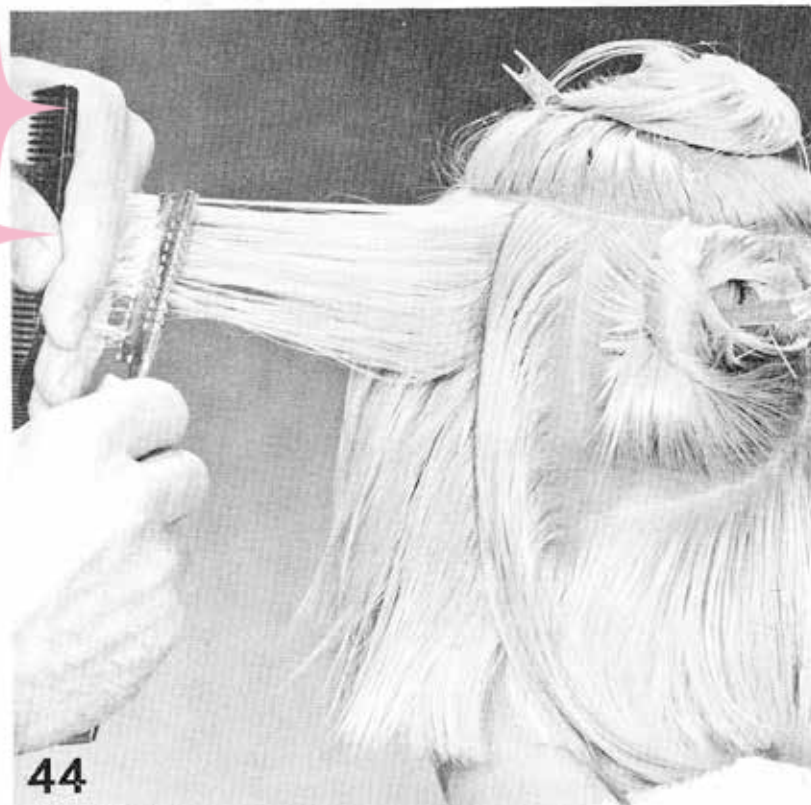
#41 Pick up guide line hair and uncut hair between fingers, slide down and out graduating from a 90 degree angle at side downward to a 45 degree angle at back. This allows a longer length of hair at crown.



#42 When guide line hair fall away cut remaining hair, do not life hair too high into crown.



#44 Illustrates repetition of the one inch strips. Notice length is longer for crown hair.



# Miracle Curl Brush

BEST brush  
for curls!



[VintageHairstyling.com](http://VintageHairstyling.com)



#47 Shows section 5 complete.



#45 Shows section 4 completed. Section 5 combed down into guide line hair.



#46 Continue with one inch strips working toward cheek. Elevate once again from a 45 degree to 90 degree angle at side.

#48 Center part section 1 and comb into previously cut sides.



#49 Start at the back of section, part off in one inch strip.

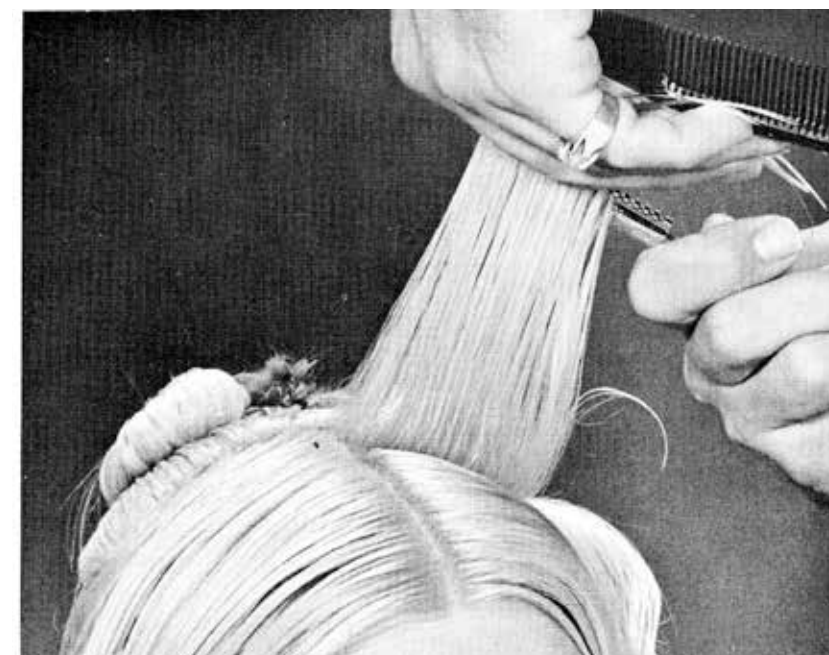




#50 Pick up part of previously cut sides. Comb up and out. Slide fingers in same direction – when previously cut hair stops falling from fingers then cut hair with razor.



#51 Pick up hair that was previously cut with the uncut hair and with same finger movement shape off excess length. Notice the angle of the hands. They are higher for this cutting than the previous one.



#52 Same action as in previous picture. Hair is held perpendicular to top of head.

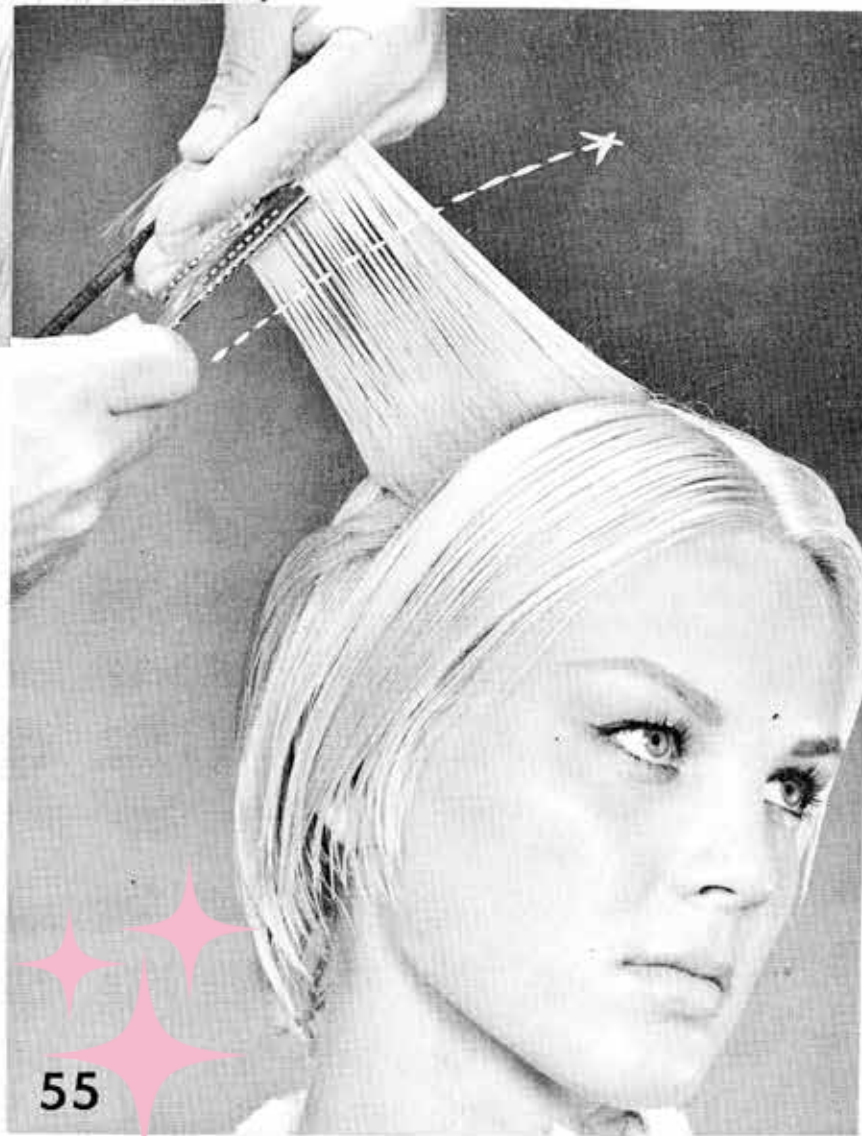


#53 Back view of same cutting. First one inch strip is finished and combed into side with another one inch strip about to be cut.





#54 Cut one inch strand of hair perpendicular to the top. Continue to measure for three inch length.



#55 Begin on opposite side. The arrow indicates constant upward movement of fingers as we cut. This is to assure consistent three inch length.



#57 Montage illustrates movement of hand and razor action. To reassure uniformity of three inch length.



#56 Cut perpendicular to the top. Arrow shows line of action.





57a

#57a Shows section 2 is the last section to be released.



57b

#57b Distribute hair in fan-like movement for even distribution of hair.



58

#58 Use apex of crown as focal point. Make pie shape partings. Hold hair up at a 45 degree angle then as hair falls away, shape off.



59

#59 Continue pie shape partings around the entire crown and as hair falls away cut off excess hair.

#60 Illustrates elevation of hands to get maximum taper. From this point we graduate downward as usual to nape of neck.



60



61

#61 Neckline is now feathered with aid of thinning shears. The cutting is done over the protection of a comb. Constantly lift all ends with comb and taper ends with a fine tooth thinning shears. This fine taper finish can also be achieved with the aid of the razor. Hold blade flat against small piece of hair held between thumb and index finger of opposite hand. This fine taper will aid in a better controlled contour in finished hairstyle.

Soft...  
Long Lasting...  
Wet Sets  
Courtesy of...



Available @ [VintageHairstyling.com](http://VintageHairstyling.com)





#62 This left side illustration shows the hair parted and the wet hair combed and molded into the natural tendency.

#63 Shows the right side balance in the last checkup to determine if both sides are even.



#64 Here our model's hair is combed into a wet check style. This is one of the many ways a stylist might style her hair. All top stylists use this method to check finished haircuts and also to wet plan their style.



#65 At this stage, comb and recomb the wet hair. Now is the time to look for strong growth and directional patterns. It is a good time to study your model in the the mirror so you can determine if she needs height, width, a sleek back line, or bangs.

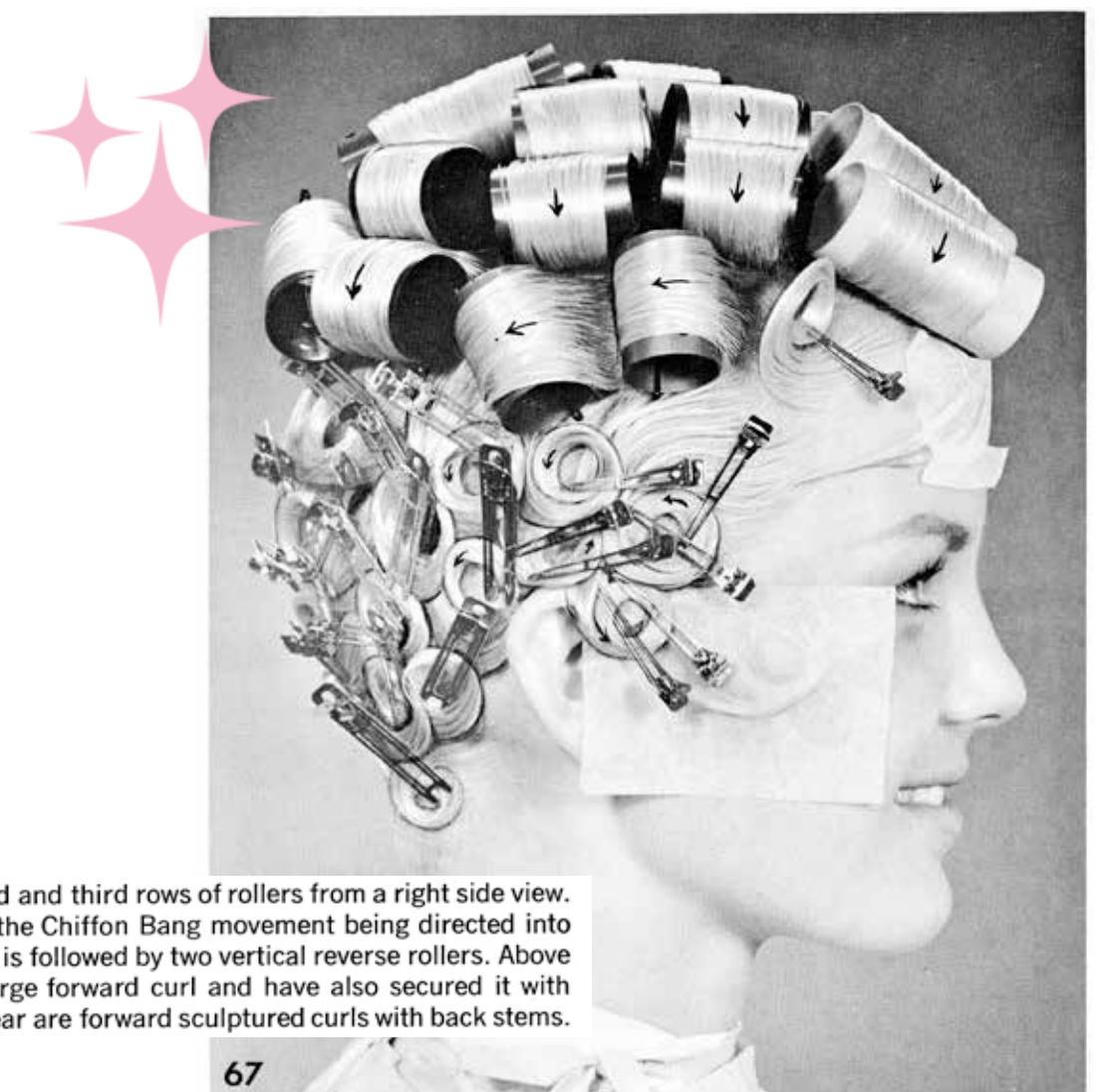




Since this is basically a haircutting book, we, the authors, decided to devote most of our pages to clearly defining the step by step method to our Convertible Cut. We will now show in the following pages how two hairstyles can be combed from this set that follows.

**#66** Mold Chiffon Bangs with the aid of a setting lotion. Use a permanent wave end paper moistened with lotion and press it on the still wet and molded bangs. The first row of rollers are set on an angle and rolled all toward the model's right side in the same direction as the bangs. The rollers behind this are also set in the same direction.

Note the change of direction.



**#67** Here we see the second and third rows of rollers from a right side view. We also can see the ends of the Chiffon Bang movement being directed into a reverse stand up curl. This is followed by two vertical reverse rollers. Above the ear we have molded a large forward curl and have also secured it with end papers. All curls above ear are forward sculptured curls with back stems.



## MAGNETIC ROLLERS!

Add Lady Eliza Clips to your order and save!



VintageHairstyling.com





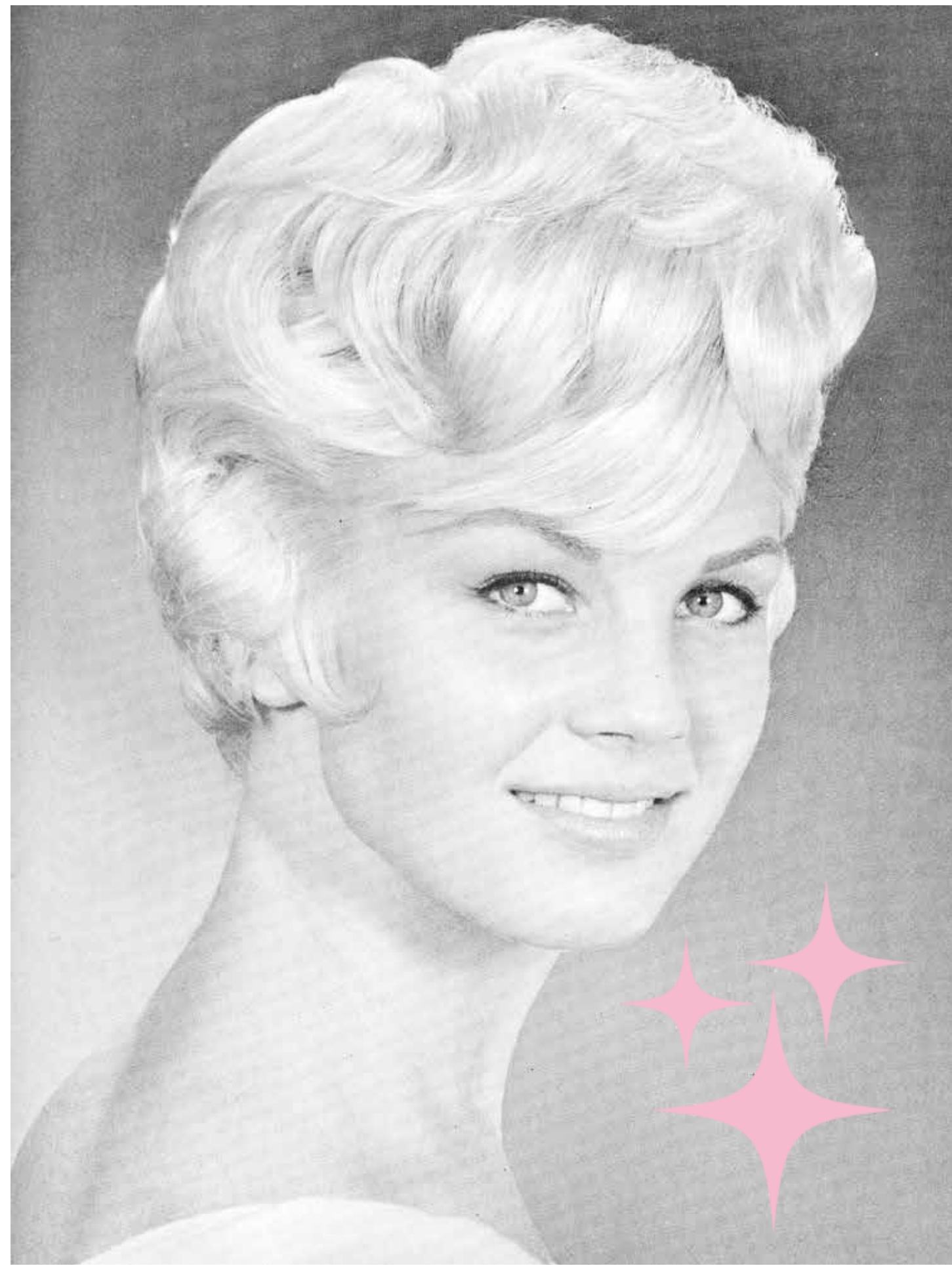
#68 Fill high crown area with upward directed stems on rollers. Complete the rest of the back of the head with all curls forward to our model's left side. Change of direction is three-fourths of an inch behind right ear.



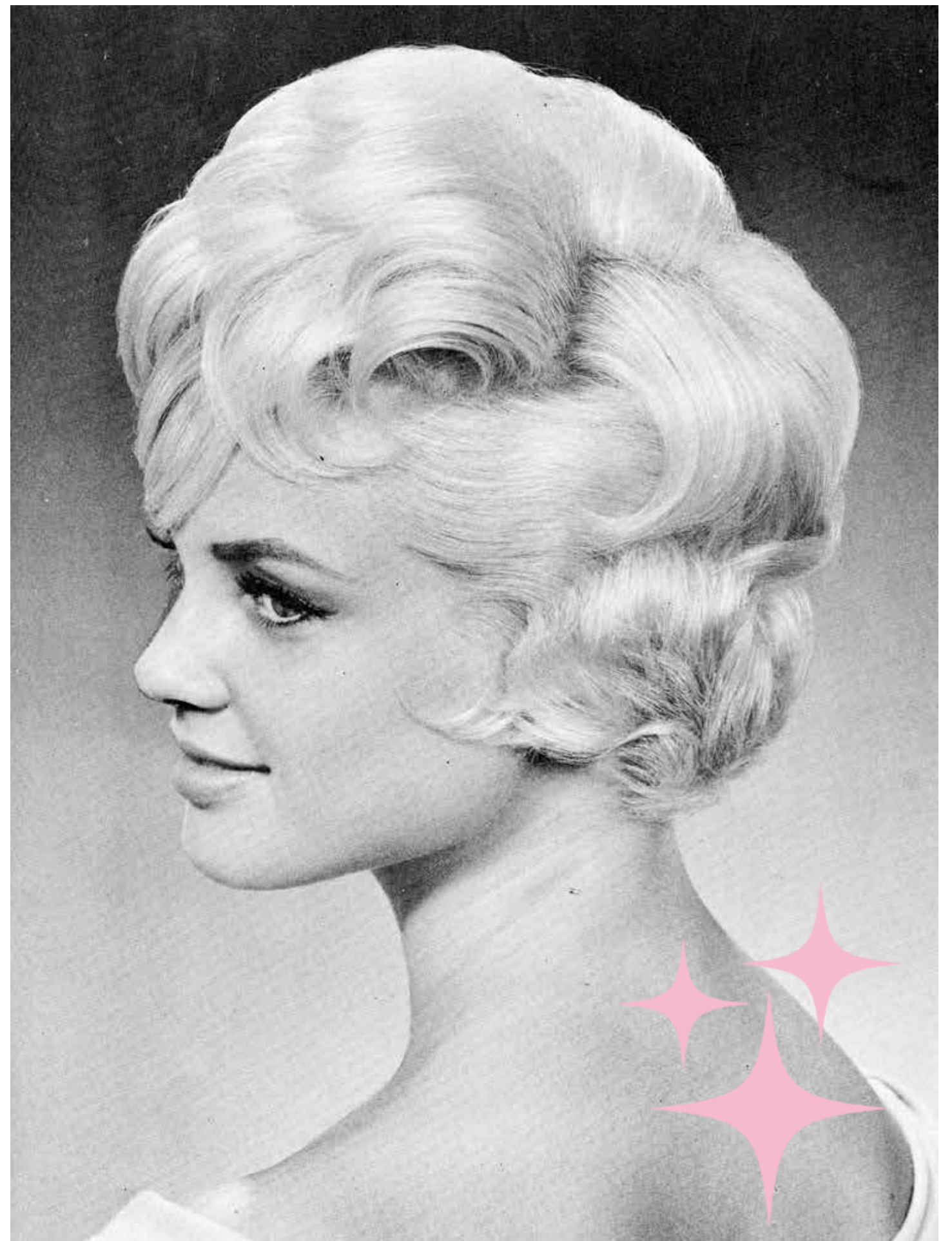
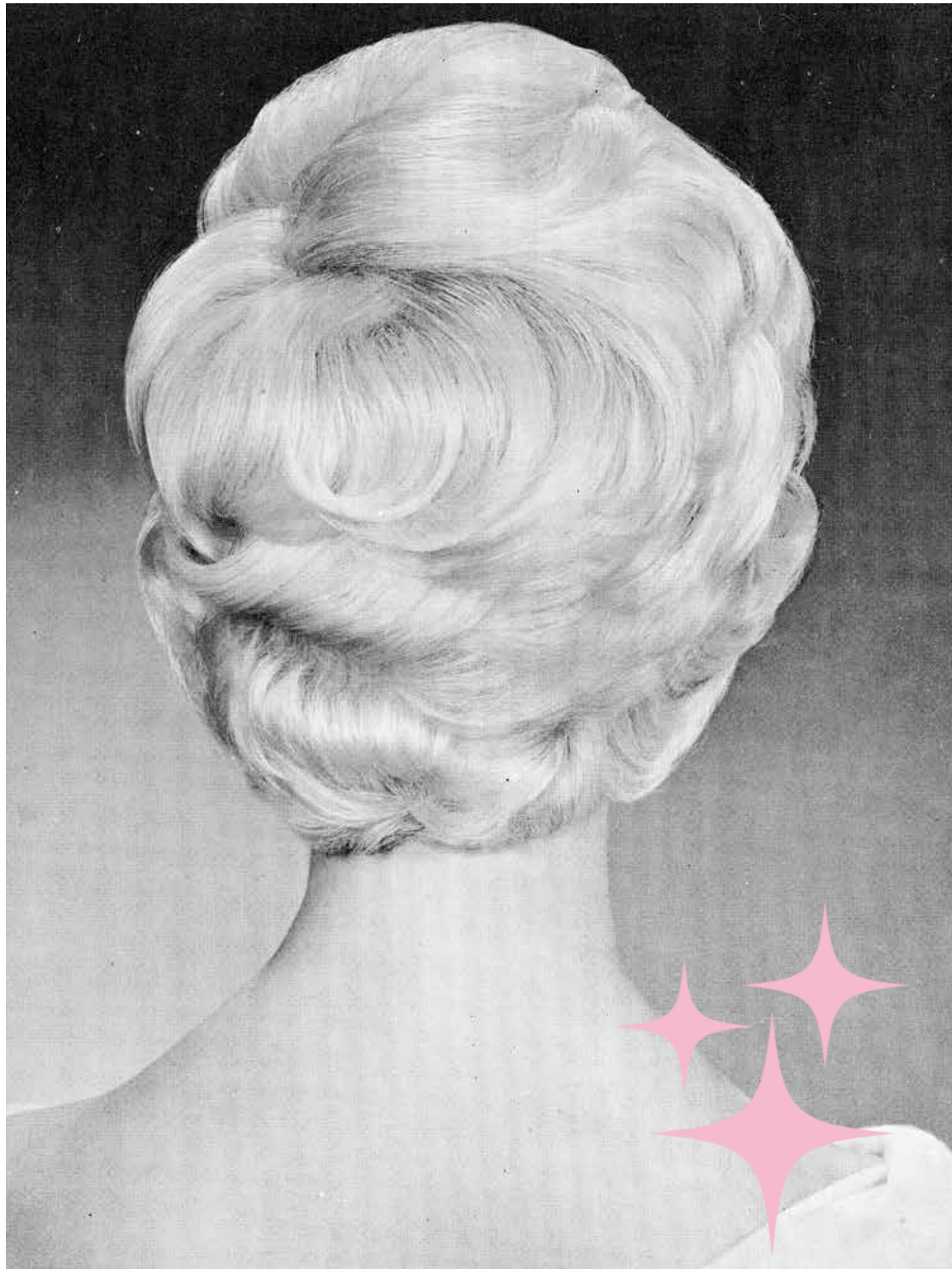
#69 Left side is molded and curls set forward in same set as other side. All the back curls meet this area. Remember there is no change of direction on this side. The change of direction only occurs three-fourths of an inch behind the right ear.

Above these curls you now see a view of the three vertical reverse rollers. This will enable us to keep the movement directed to the back of the crown.

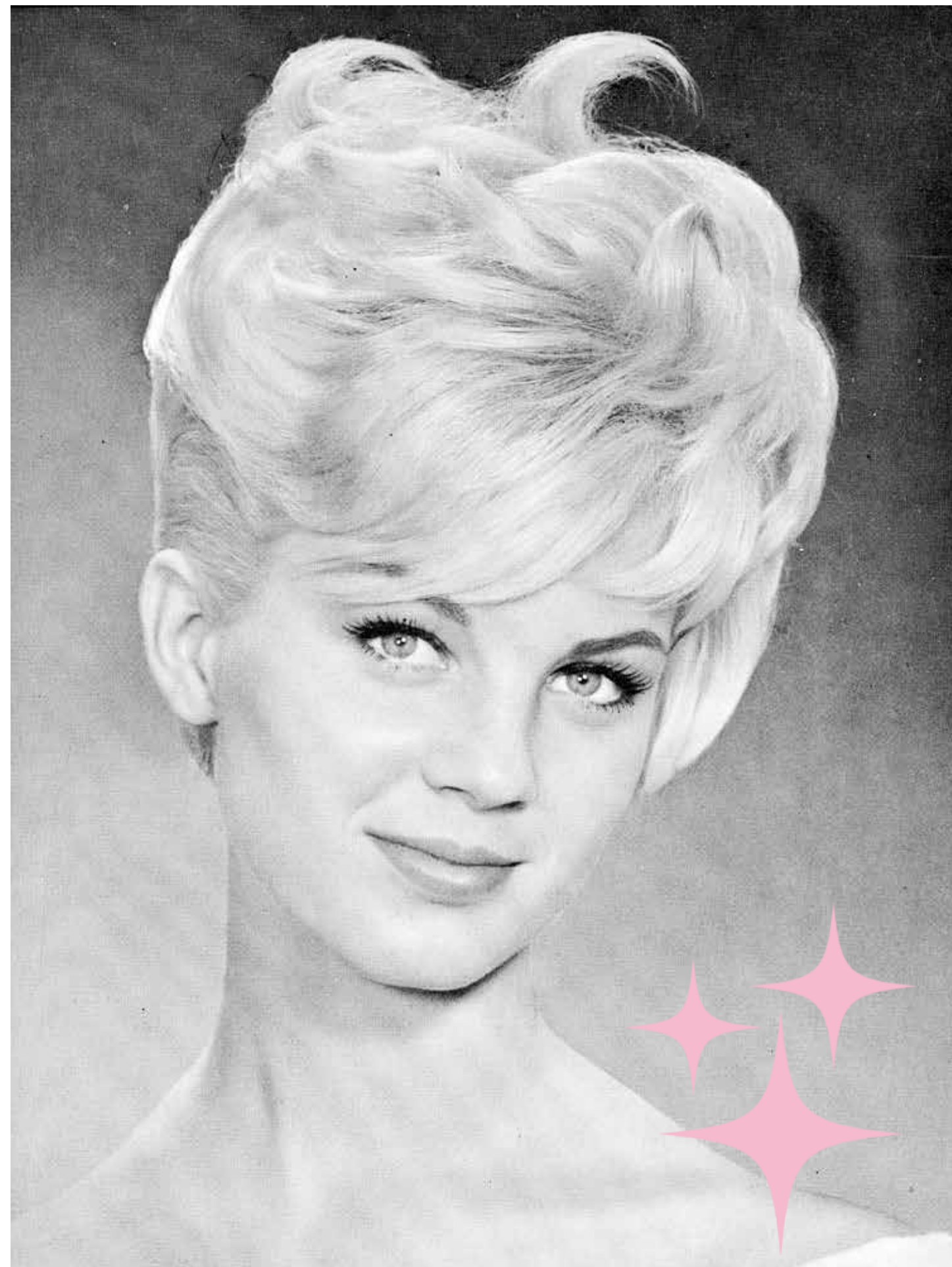




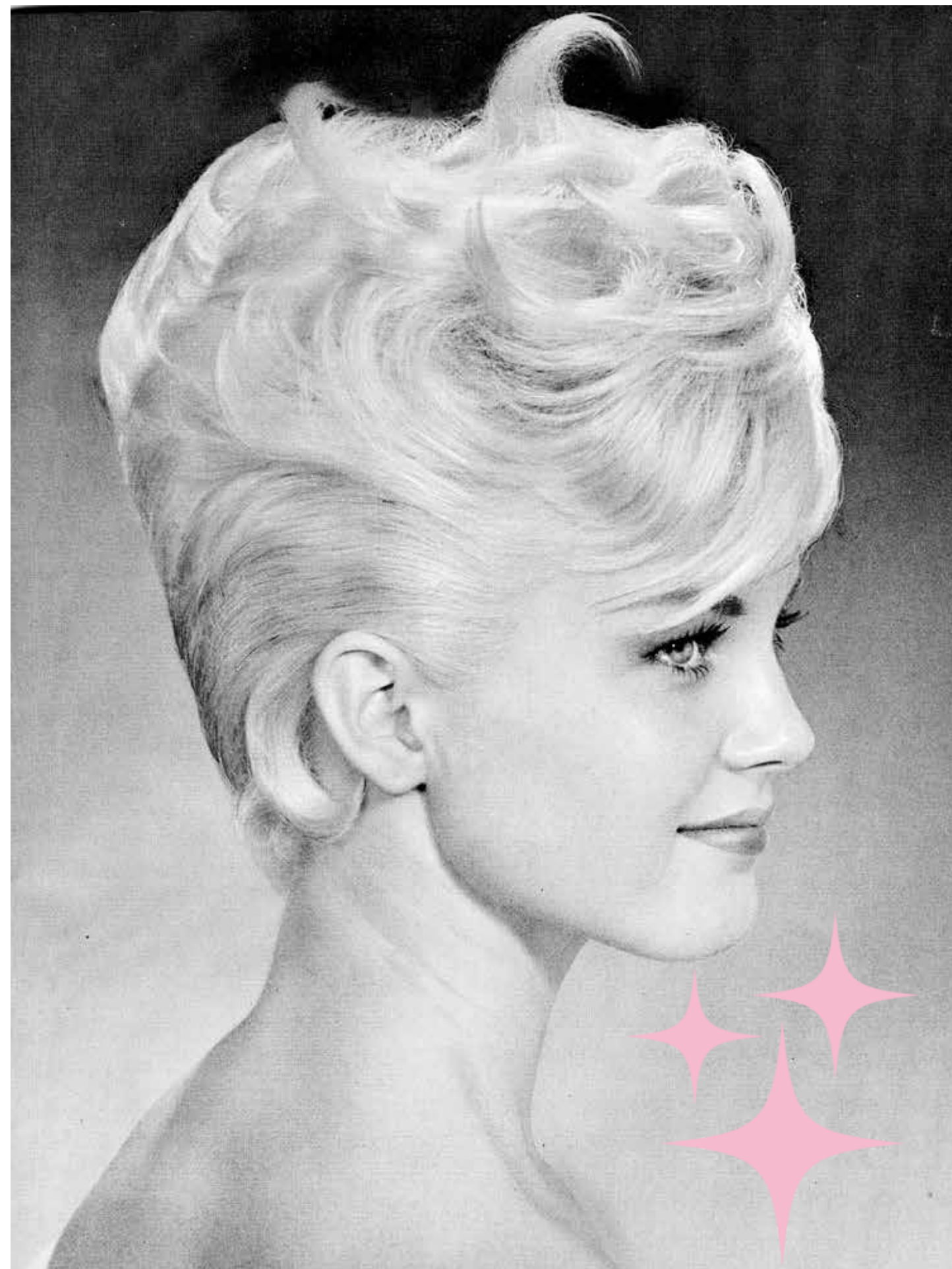




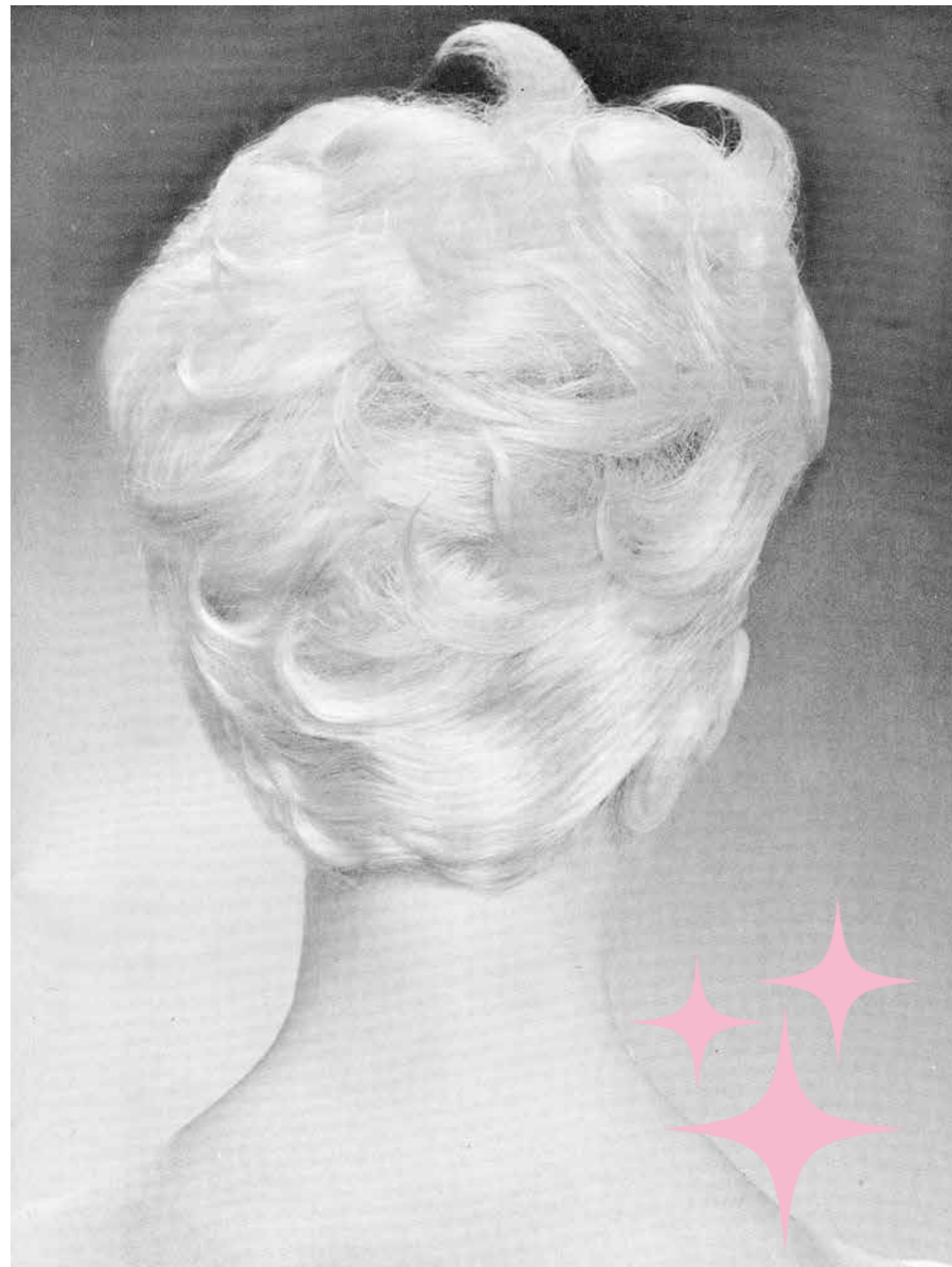
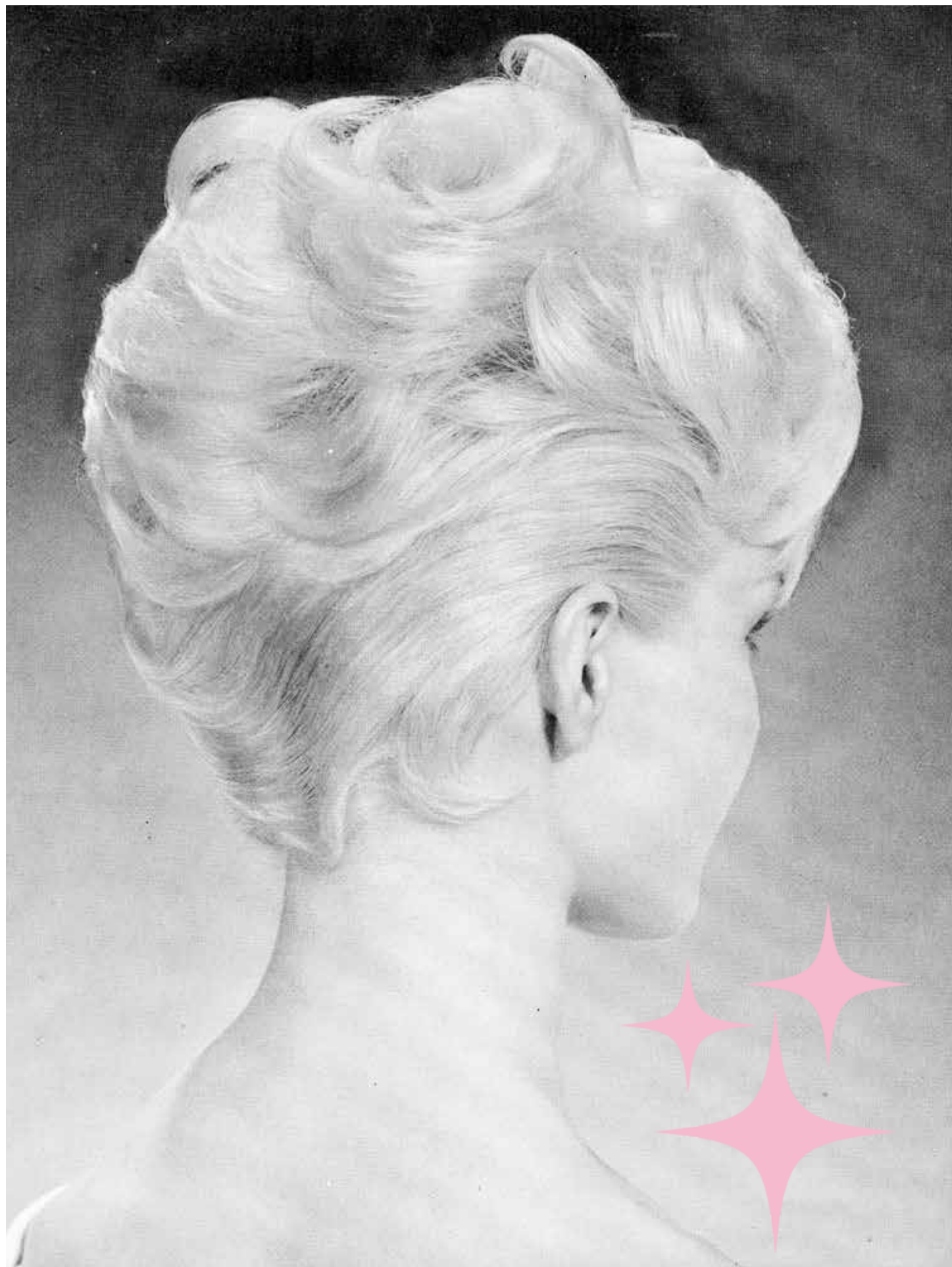






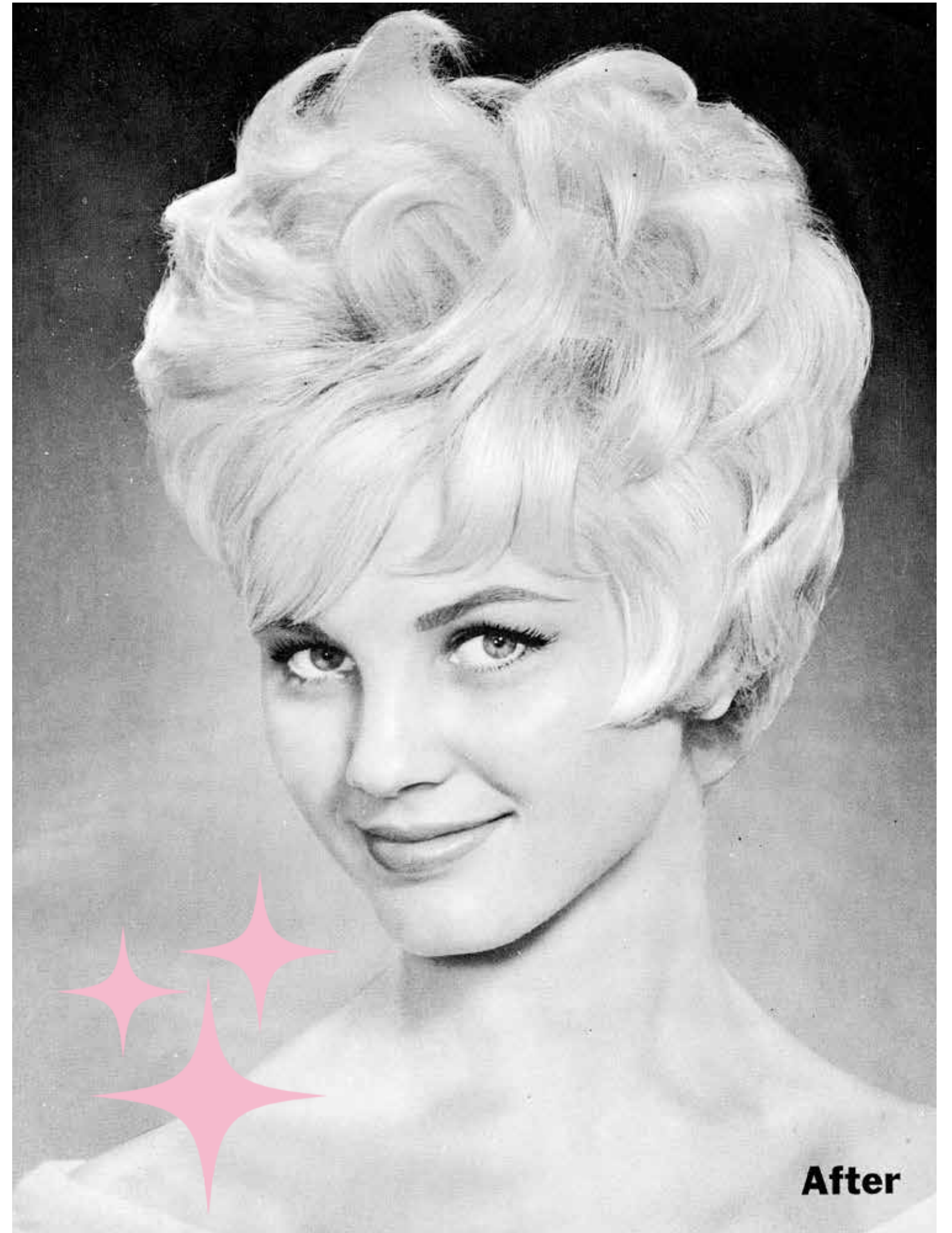








**Before**



**After**



## Discover more vintage beauty items...

- ◆ See our selection of tutorial books, retro hair tools, and educational material!
- ◆ Stay in touch with our email newsletter to get notifications of special sales and exclusive tutorials!
- ◆ Find out when demonstrations and classes will be available in your area!

Shop [VintageHairstyling.com](http://VintageHairstyling.com) today!



*Create Vintage-Inspired Wedding Hairstyles:*  
A Step-by-Step Guide to Styling Classic Hairstyles for Any Special Occasion including Weddings, Proms, and Formal Events



*Vintage Hairstyling:*  
Retro Styles with Step-by-Step Techniques



*Retro Makeup:*  
Techniques for Applying the Vintage Look

Get yours at **VintageHairstyling.com**

# Rockin' Rollers

Soft Hair Roller and Hairstyle Filler

Includes:  
• 12 lightweight leopard print rollers  
• 40-page booklet with full instructions for all of these looks and more using the Rockin' Rollers